

ARTCC ARGENTINO AD 2.SAZN

NO VALIDO PARA NAVEGACION REAL. ADAPTADO PARA SU UTILIZACION EN UN AMBITO VIRTUAL
SAZN – NEUQUEN / PRESIDENTE PERON

AD 2.17 ESPACIO AEREO ATC

Zona de Control:

- | | |
|-------------------------------------|---|
| 1. Designación: | Zona de Control Neuquén |
| 2. Límites verticales: | <u>3500 FT</u>
GND |
| 3. Clasificación del espacio aéreo: | C |
| 4. Distintivo de llamada: | NEUQUEN TORRE |
| 5. Altitud de transición: | 3600 FT. |
| 6. Nivel de transición: | QNH de 980 a 997 FL 055
QNH de 998 a 1016 FL 050
QNH de 1017 a 1035 FL 045
QNH de 1036 a 1054 FL 040 |

Area de Control Terminal:

- | | |
|-------------------------------------|---|
| 1. Designación: | Area de Control Terminal Neuquén |
| 2. Límites verticales: | <u>FL 195</u>
2000 FT |
| 3. Clasificación del espacio aéreo: | B: FL 195 / FL 145
C: FL 145 / 2000 FT |
| 4. Distintivo de llamada: | NEUQUEN TORRE |

AD 2.18 INSTALACIONES DE COMUNICACIONES ATS

SERVICIO	DISTINTIVO DE LLAMADA	FRECUENCIA	OBSERVACIONES
GND	Neuquén Superficie	121.800	-
ATIS	ATIS Neuquén	127.650	-
APP	Neuquén Torre	119.800	-

AD 2.19 CARTAS AERONAUTICAS

- | | |
|-----------------------|--|
| - Plano de aeródromo: | SAZN.APT |
| - Cartas IAC: | SAZN.IAC NO.1 RWY 09
SAZN.IAC NO.2 RWY 09
SAZN.IAC NO.3 RWY 09
SAZN.IAC NO.4 RWY 27
SAZN.IAC NO.5 RWY 09 |
| - Cartas STAR: | SAZN.STAR (RNAV-RWY 09) |

(DEJADO EN BLANCO INTENCIONALMENTE)

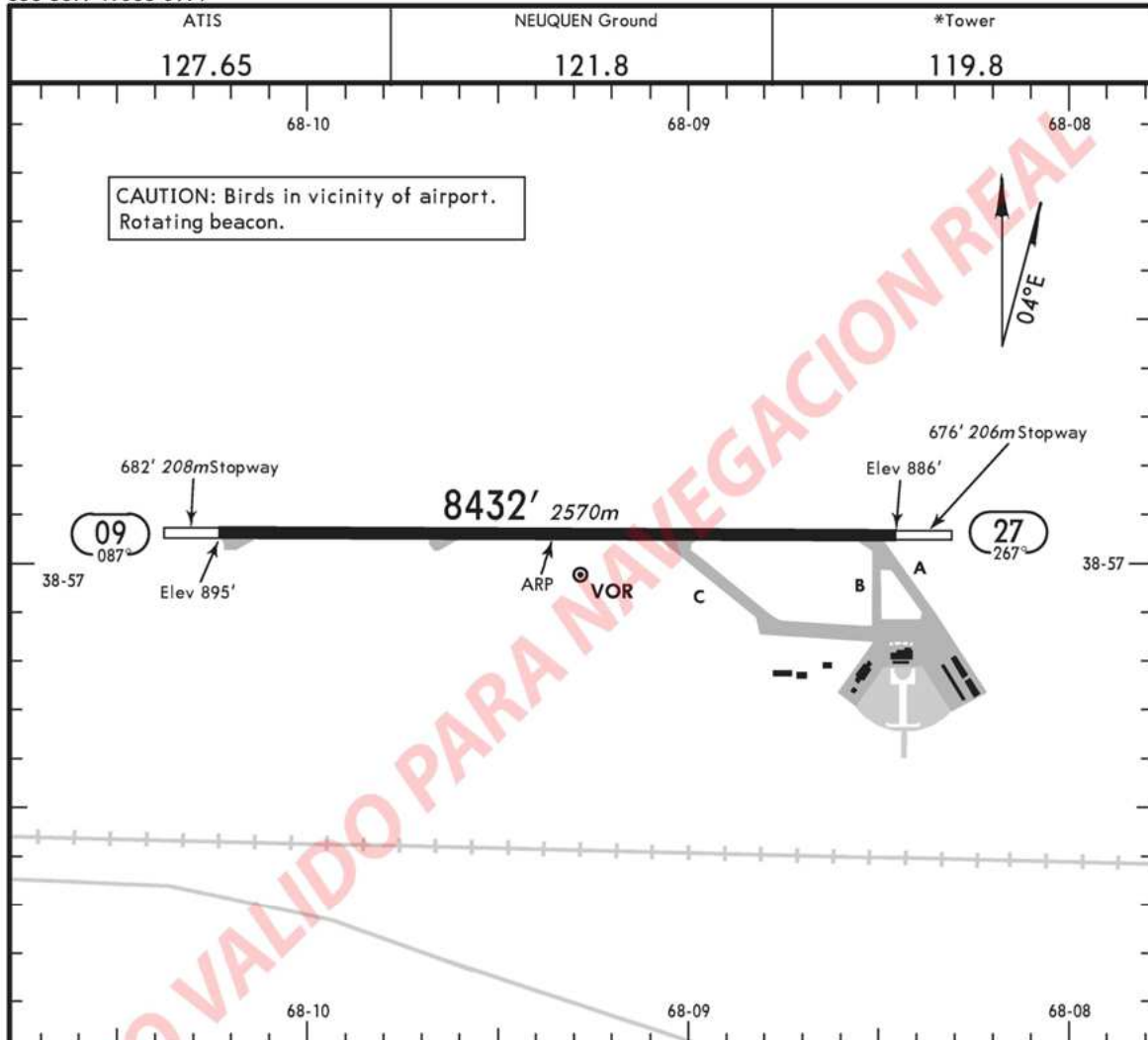
APT

SAZN

Apt Elev **895'**
S38 56.9 W068 09.4

NEUQUEN, ARGENTINA

PRESIDENTE PERON



ADDITIONAL RUNWAY INFORMATION					
RWY		USABLE LENGTHS		TAKE-OFF	WIDTH
		LANDING BEYOND Threshold	Glide Slope		
09	RL PAPI-R (angle 2.7°)		7189' 2191m		148'
27	RL PAPI-L (angle 3.0°)				45m

SAZN

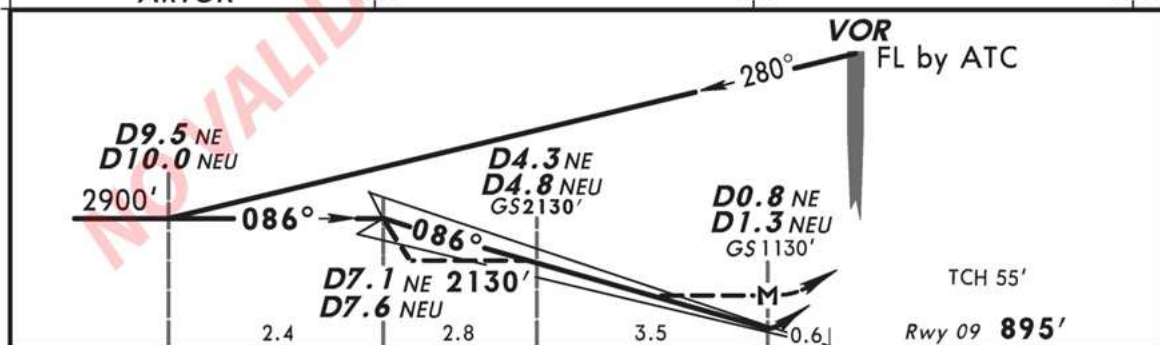
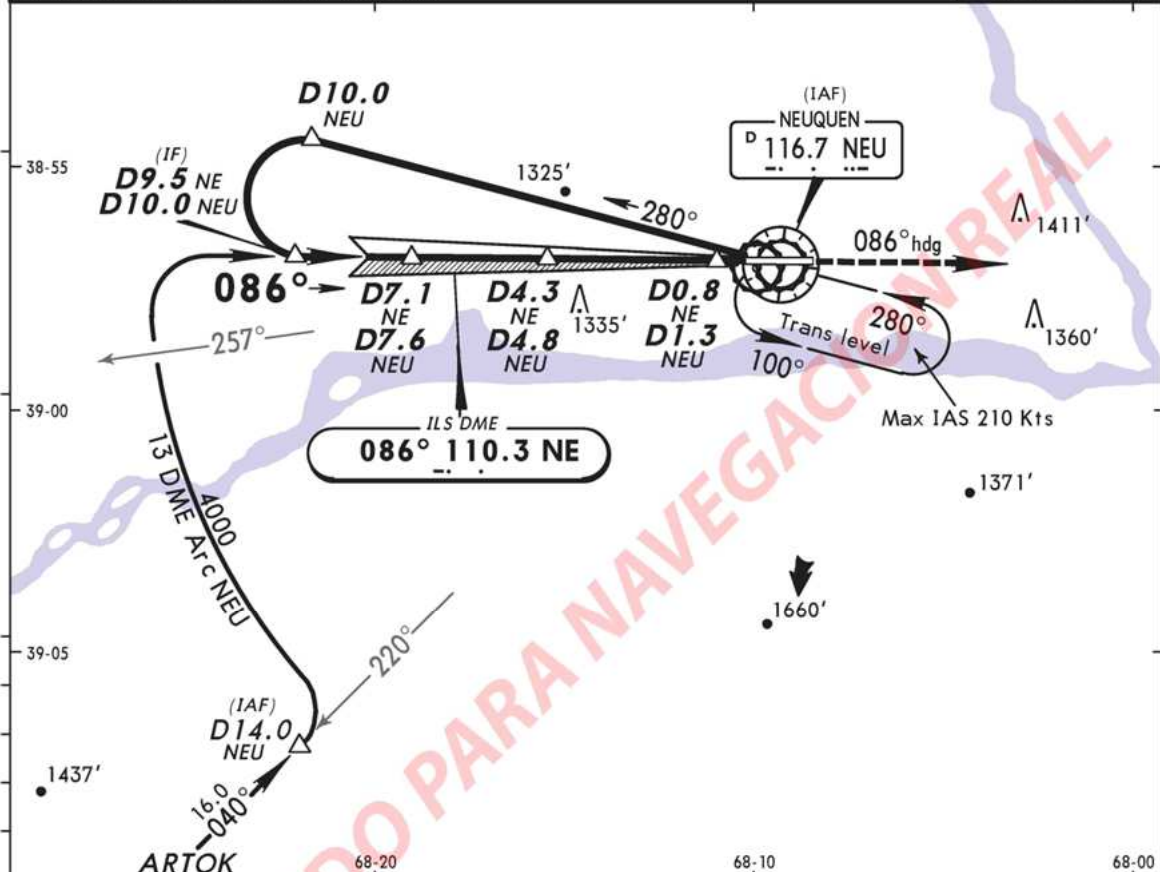
NEUQUEN, ARGENTINA

No.1

PRESIDENTE PERON

VOR DME ILS DME Rwy 09

ATIS 127.65		*NEUQUEN Tower 119.8		Ground 121.8
LOC NE 110.3	Final Apch Crs 086°	GS D4.3 NE D4.8 NEU 2130' (1235')	ILS DA(H) 1130' (235')	Apt Elev 895' Rwy 09 895'
MISSED APCH: Maintain 086° heading climbing to 3600' and follow instructions from CONTROL.				
Alt Set: hPa		Rwy Elev: 32 hPa	Trans level: By ATC	Trans alt: 3600'
1. Arc not authorized without VOR DME.				MSA NEU VOR

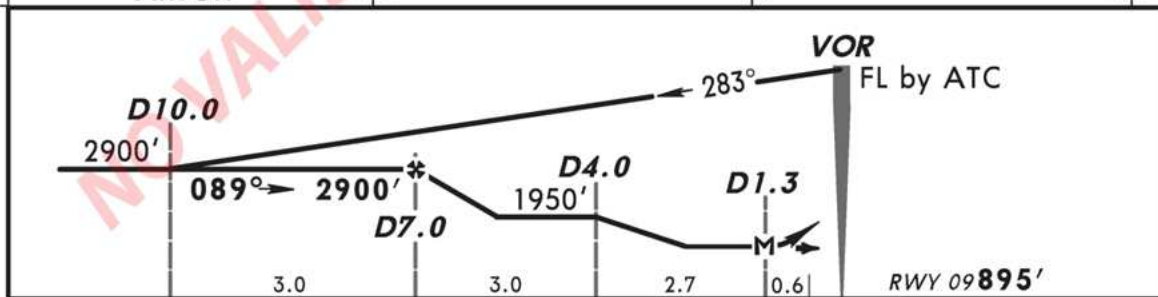
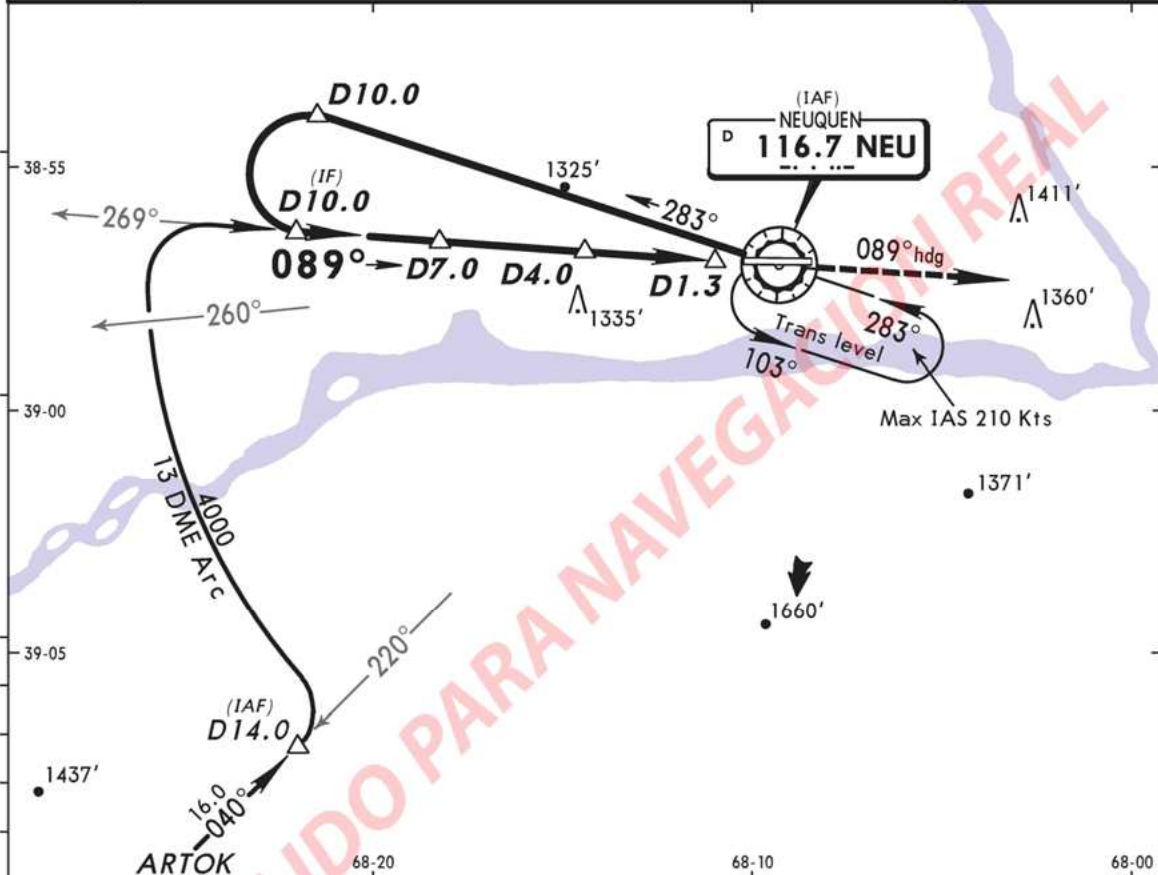
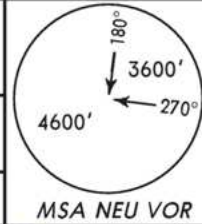


Gnd speed-Kts		70	90	100	120	140	160	PAPI-R	086° hdg	3600' ↑
GS 2.70°		334	430	478	573	669	764			
MAP at D0.8 NE/D1.3 NEU or										
D4.3 NE/D4.8 NEU to MAP 3.5		3:00	2:20	2:06	1:45	1:30	1:19			
STRAIGHT-IN LANDING RWY09								CIRCLE-TO-LAND		
ILS				LOC (GS out)				Not Authorized North of Rwy 09/27		
DA(H) 1130' (235')				MDA(H) 1300' (405')						
A	1200m			2000m		Max Kts	MDA(H)			
100						1710' (815')-2000m				
135						1710' (815')-2800m				
180						1870' (975')-3700m				
D				2800m		205	1870' (975')-4600m			

SAZN
PRESIDENTE PERON

NEUQUEN, ARGENTINA
No.2 VOR DME Rwy 09

ATIS 127.65		*NEUQUEN Tower 119.8		Ground 121.8
VOR NEU 116.7	Final Apch Crs 089°	Minimum Alt D7.0 2900' (2005')	MDA(H) 1450' (555')	Apt Elev 895' Rwy 09 895'
MISSED APCH: Maintain 089° heading climbing to 3600' and follow instructions from CONTROL.				
Alt Set: hPa		Rwy Elev: 32 hPa	Trans level: By ATC	Trans alt: 3600'
1. DME required.				

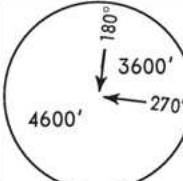


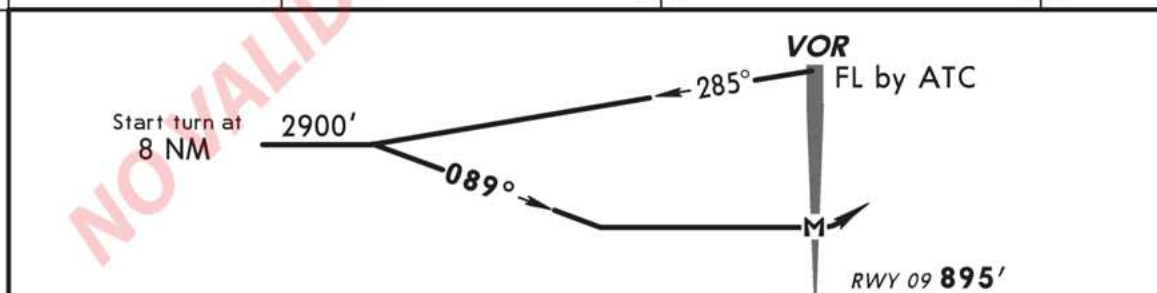
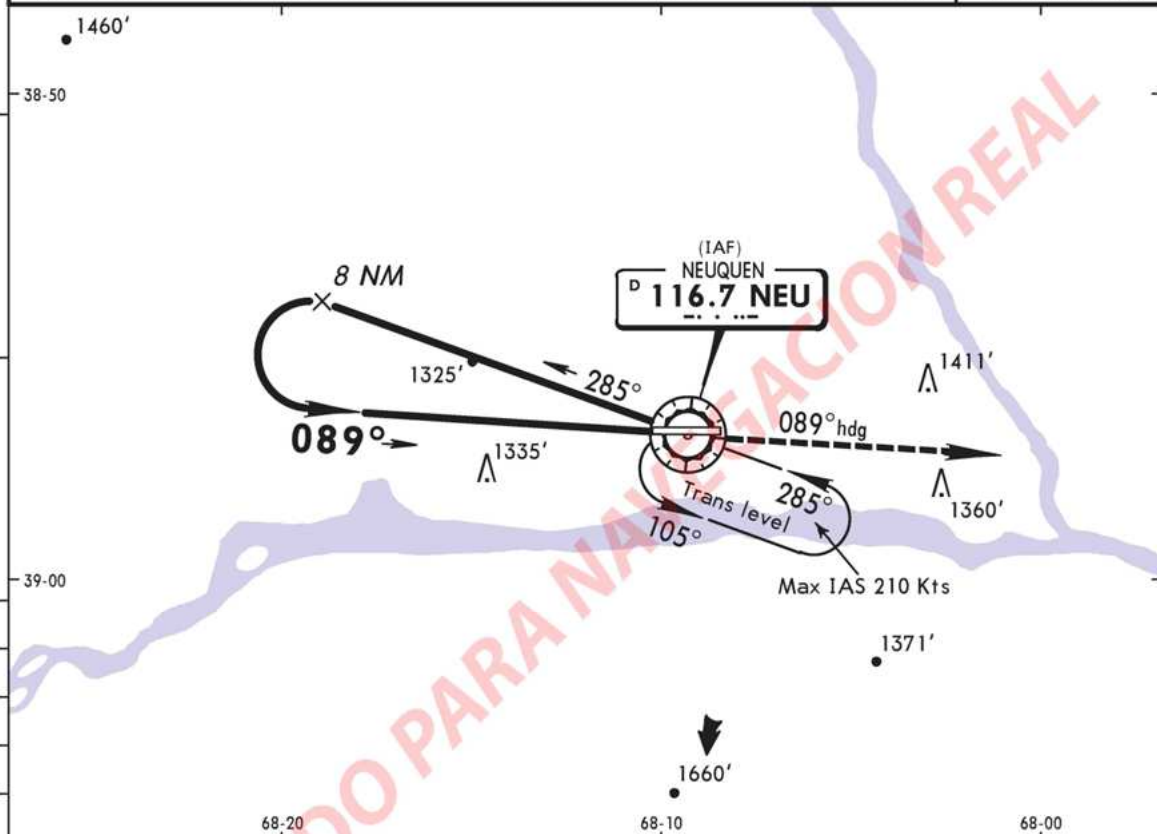
Gnd speed-Kts	70	90	100	120	140	160			
MAP at D1.3 or D7.0 to MAP	5.7	4:53	3:48	3:25	2:51	2:27	2:08	PAPI-R	089° hdg

STRAIGHT-IN LANDING RWY09			CIRCLE-TO-LAND		
MDA(H) 1450' (555')			Not Authorized North of Rwy 09/27		
A	2000m		Max Kts	MDA(H)	
B	2800m		100	1710' (815')-2000m	
C	3200m		135	1710' (815')-2800m	
D			180	1870' (975')-3700m	
			205	1870' (975')-4600m	

SAZN
PRESIDENTE PERON

NEUQUEN, ARGENTINA
No.3 VOR Rwy 09

ATIS 127.65				*NEUQUEN Tower 119.8		Ground 121.8	
VOR NEU 116.7	Final Apch Crs 089°	No FAF	MDA(H) 1710' (815')	Apt Elev 895' Rwy 09 895'			
MISSED APCH: Maintain 089° heading climbing to 3600' and follow instructions from CONTROL.							
Alt Set: hPa		Rwy Elev: 32 hPa		Trans level: By ATC			
MSA NEU VOR							

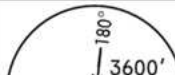


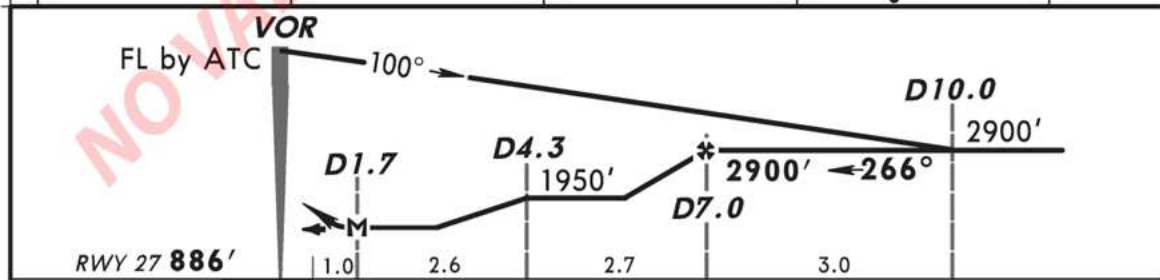
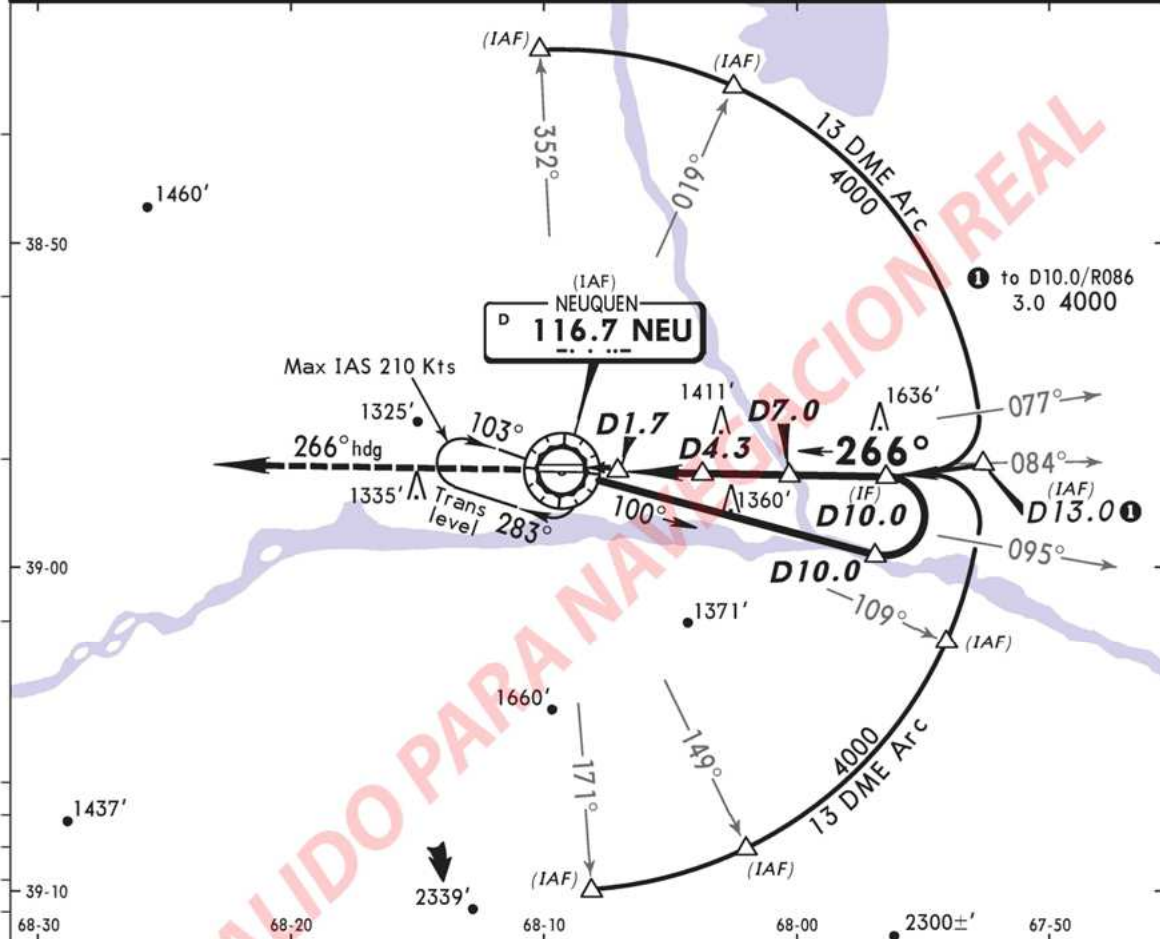
Gnd speed-Kts	70	90	100	120	140	160			PAPI-R	089° hdg	3600' ↑
Descent Gradient 4.5%	319	410	456	547	638	729					
MAP at VOR											
STRAIGHT-IN LANDING RWY09							CIRCLE-TO-LAND				
MDA(H) 1710' (815')							Not Authorized North of Rwy 09/27				
A	2000m						Max Kts	MDA(H)			
B	2400m						100	1710' (815') -2000m			
C	4000m						135	1710' (815') -2800m			
D	4400m						180	1870' (975') -3700m			
							205	1870' (975') -4600m			

IAC NO.4 RWY 27

SAZN
PRESIDENTE PERON

NEUQUEN, ARGENTINA
No.4 VOR DME Rwy 27

ATIS 127.65				*NEUQUEN Tower 119.8		Ground 121.8	
VOR NEU 116.7	Final Apch Crs 266°	Minimum Alt D7.0 2900' (2014')	MDA(H) 1450' (564')	Apt Elev 895' Rwy 27 886'		 <p>180° 3600' 270° 4600'</p>	
MISSED APCH: Maintain 266° heading climbing to 4600' and follow instructions from CONTROL.							
Alt Set: hPa Rwy Elev: 32 hPa		Trans level: By ATC		Trans alt: 3600'			
1. VOR DME required.							



Gnd speed-Kts	70	90	100	120	140	160		PAPI-L	266° hdg	4600' ↑
MAP at D1.7 or D7.0 to MAP 5.3	4:33	3:32	3:11	2:39	2:16	1:59				
STRAIGHT-IN LANDING RWY27							CIRCLE-TO-LAND			
MDA(H) 1450' (564')							Max Kts	Not Authorized North of Rwy 09/27		
A	2000m						100	MDA(H) 1710' (815')-2000m		
B							135	1710' (815')-2800m		
C							180	1870' (975')-3700m		
D							205	1870' (975')-4600m		

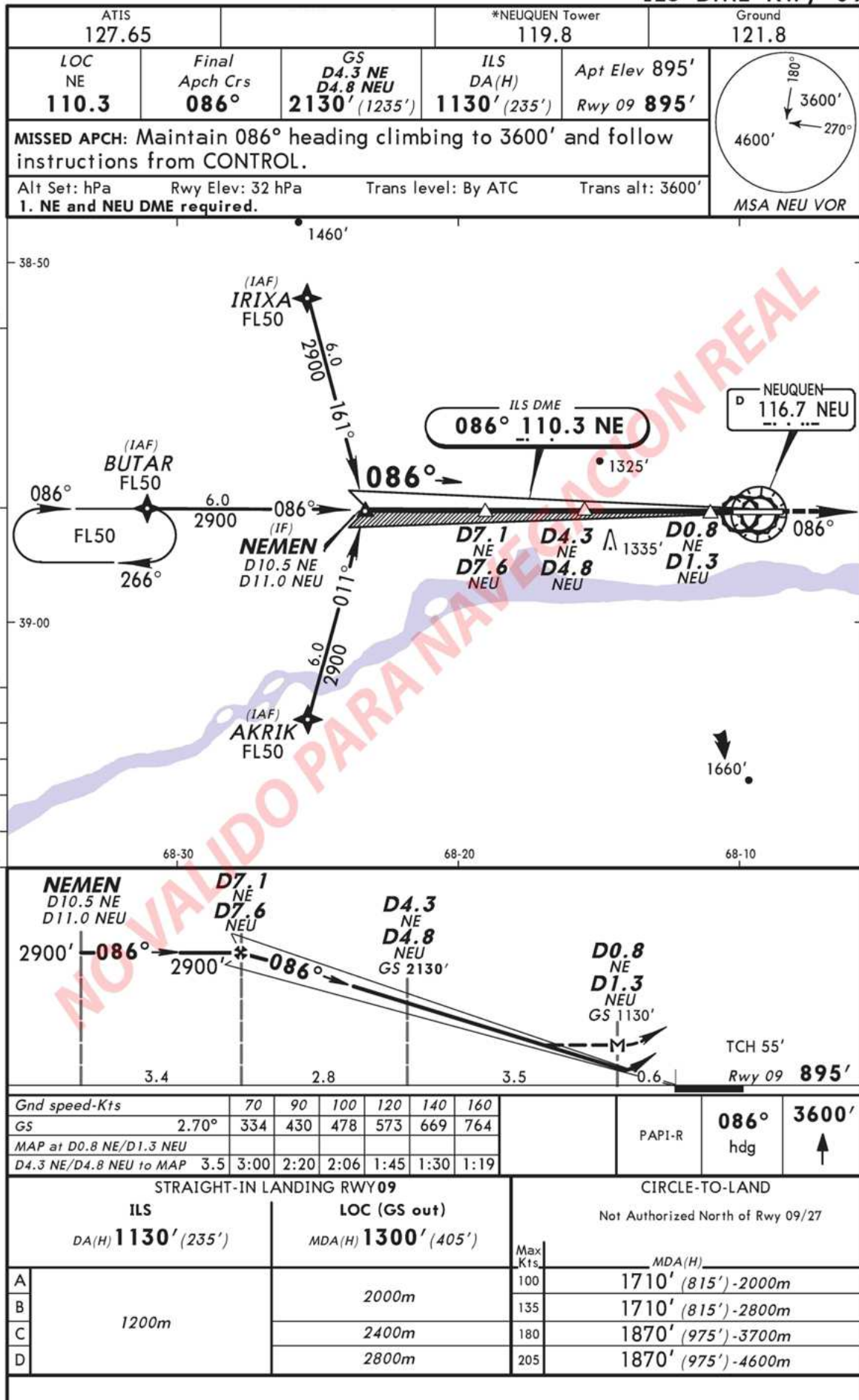
SAZN

NEUQUEN, ARGENTINA

No.5

PRESIDENTE PERON

ILS DME Rwy 09

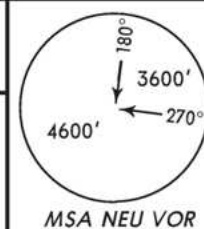


STAR (RNAV-RWY 09)

SAZN
PRESIDENTE PERON

NEUQUEN, ARGENTINA

RNAV STAR

ATIS
127.65Apt Elev
895'Alt Set: hPa Trans level: By ATC Trans alt: 3600'
1. Basic RNP 1 required. 2. GNSS required.
3. RADAR not required.

ARTOK 1 (ART 1), DEXAL 1 (DEX 1),
ILTOS 1 (TOS 1), KOTOG 1 (KOT 1),
OREPA 1 (ORE 1), OSEKO 1 (OSE 1),
PORPA 1 (POR 1), ROPON 1 (PON 1),
UGAGI 1 (UGA 1) RNAV ARRIVALS
(RWY 09)

